



Product Service

CERTIFICATE

No. Z2 18 02 22757 989

Holder of Certificate: HAGS Aneby AB

Grännavägen 7
578 23 Aneby
SWEDEN



Certification Mark:



Product: Combination playing construction

The product was tested on a voluntary basis and complies with the essential requirements. The certification mark shown above can be affixed on the product. It is not permitted to alter the certification mark in any way. In addition the certification holder must not transfer the certificate to third parties. See also notes overleaf.

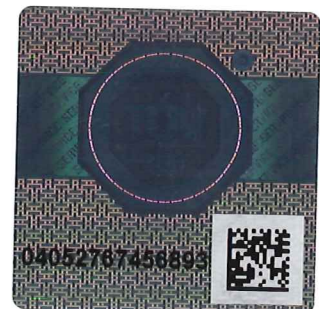
Test report no.: 713124267-1

Valid until: 2023-02-06

Date, 2018-02-07

(Tobias Hofmann)

Page 1 of 2





Product Service

CERTIFICATE

No. Z2 18 02 22757 989

Model(s):

HAGS UniPlay:
 Abbax; Abrid; Actus; Adantes; Admirka; Afrykos;
 Agrypso; Alanis; Alto; Amigo; Ango; Apollo; Arida;
 Arilo; Aslam; Assaril; Aureli; Avaren; Balakolo;
 Belidore; Bell; Bellom; Bengal; Bihar; Billores; Birao;
 Birro; Bolanta; Bozzi; Brann; Buridos; Byrmax; Cestore;
 Chaia; Charar; Cixtona; Combur; Crox; Cullerma;
 Cybex; Dalux; Daxto; Dermida; Dio; Distra; Dumor;
 Ebrico; Ebriente; Eco Station; Ediana; Egrianta; Elinaz;
 Emarosa; Enzia; Epa; Eptix; Eriplos; Esten; Etoru; Exon;
 Feliz; Ficcorenta; Finn; Fogus; Fyrma; Galliente;
 Gare du Nord; Germinia; Gizzo; Gumbo; Gytro; Harira;
 Hecce; Helios; Hembra; Herakles; Heryton; Himbino;
 Homaria; Huxtor; Hydra; Ibax; Icco; Igge; Igma; Iktaz;
 Ipx; Ippy; Issens; Jadar; Jagur; Jilax; Jillbrad; Juniz;
 Juntas; Jynder; Kagig; Kandriano; Karamata; Karro;
 Kimber; Kolale; Kolo; Kopur; Kotin; Kotka; Kotun; Krixton;
 Kroj; Labyrinth; Ladona; Leipton; Levander; Lix; Lokomoko;
 Lopo; Lumba; Lycce; Malan; Malix; Manzini;
 Marl; Mars; Maver; Moul; Mucco; Murcal; Myx;
 Nabi; Naon; Neno; Nergi; Neromi; Nirra; Norba; Notre;
 Nycco; Obrino; Occy; Odix; Onyx; Orienke; Ossion;
 Patience; Peck; Petova; Phuket; Poseidon; Pote; Puo;
 Puxo; Raji; Raxon; Rutop; Rügen; Ryger; Sappa; Shadur;
 Sikkim; Talk Tube; Talking Tube Hose; Tarrali; Tergo;
 Tomela; Torresse; Tremo; Trier; Triton; Turello; Ugur;
 Ula; Umon; Utopia; Vadito; Vagabond; Valaia; Viking; Volta;
 Wob; Wallau; Wana; Woodstock; Zapata

Parameters:

Combination playground systems are comprised of platforms, barriers, bars, railings and pots in color Options

Module dimension: 1.00 m
 Steel material: galvanized and powder lacquered.
 Post and beam: Laminated timber, steel tubing 110 mm.
 Barrier material: Wood, steel, HPL
 Floor material: Wood, steel, composite-steel (recycled polyethene) or HPL-Floor
 Roof material: Wood, steel, polypropylene, HPL
 Chain: Hot galvanized chain with covering in solid polyurethane
 Slide: Stainless steel slide-surface

Anchoring:
 Sunken concrete base
 Sunken steel base / frame
 Concrete foundation on site
 Anchoring on concrete (expansion bolt)

Tested according to:

DIN EN 1176-1:2017
 EN 1176-1:2017
 DIN EN 1176-3:2017
 EN 1176-3:2017

Production Facility(ies):

02994

Page 2 of 2

T#F